

## COMPARISON OF PUSH PULL AND VSI BASED D-STATCOM FOR MULTI BUS SYSTEM

Venkata Kishore P.,<sup>1</sup> Rama Reddy S.,<sup>2</sup> Kishore P.V.<sup>3</sup>

<sup>1</sup>Research Scholar, Sathyabama University, Chennai-600119, India.

<sup>2</sup>Department of Electrical and Electronics Engineering, Jerusalem College of Engineering, Chennai, India.

<sup>3</sup>Department of Electrical and Electronics Engineering, Mother Teresa Institute of Science and Technology, Sathupally-507303, India.

Email: <sup>1</sup>pvkishorehod@gmail.com, <sup>2</sup>srreddy@yahoo.com, <sup>3</sup>pvkishorefree@yahoo.com

### ABSTRACT

The D-STATCOM is a shunt connected FACTS device which supplies reactive power to the load to improve the voltage stability of the load busses. The D-STAT COM in multi bus system is capable of reducing the losses and improving the voltage regulation. This work deals with comparison of Push Pull and Voltage Inverter based D-STATCOM for multi bus system. Eight bus system is modeled using the elements of SIMULINK. The models are developed for eight bus system with and without D-STATCOM. The two D-STATCOM systems are compared with respect to total harmonic distortion and reactive power comparison. The D-STATCOM is studied with respect to the voltage stability improvement at the load busses. The results of VSI based D-STATCOM system are compared with those of Push pull inverter based D-STATCOM system.

**Keywords:** Distribution statics synchro- nous compensator (D-STATCOM), Voltage source inverter (VSI), Push Pull inverter, Power Quality, FACTS.

### I. INTRODUCTION

In recent years, major transformations have been introduced into the structure of electrical power utilities to improve efficiency in the operation of the power system networks by reregulating the industries and opening it to their private competitors. Developing of new approaches to Power System Operation and Control are required for overload relief, and efficient and reliable operation. Supporting dynamic disturbances such as transmission lines switching, loss of generation, short-circuits and load rejection, needs the reactive control to be fast enough to maintain the desired voltage levels and the system stability [1]. Flexible AC Transmission Systems (FACTS), besides the underlying concept of independent control of active and reactive power flows, are an efficient solution to the reactive power control problem and voltage in transmission and distribution systems, offering an attractive alternative for achieving such objectives. Originally, equipment based on thyristors, like TCR (Thyristor Controlled Reactor), TSC (Thyristor Switched Capacitor), and SVC (Static Var Compensator), have been employed in solving these problems, but now equipment based on controlled switches such as GTO, IGBT and IGCT is common. The Static Synchronous Compensator (StatCom), and Static VAR Compensator

(SVC) are two types of shunt controllers for injection of reactive current, their primary function is the dynamic voltage control. Related to the SVC, the current is a function of the line voltage and hence its reactive power is function of square of the line voltage. Thus, when the dynamic voltage is say 80%, the injected reactive power is reduced to 64%, just when more is needed. For similar performance, StatCom size would be much smaller and should be the more cost effective of both. The StatCom is one of the most used FACTS devices [2] for many applications. In relation to the SVC, the StatCom differs in that it can synthesize the reactive power from small values of storing elements, and, when operating in the linear region, it exhibits a similar behavior to the SVC. However, it is seen by the system as a source of synchronous voltage, while the SVC is seen as a variable admittance [3] [4]. From the reactive power point of view, the StatCom provides operating characteristics similar to a rotating synchronous compensator without the mechanical inertia, and it provides rapid controllability on the three-phase voltages both in magnitude and phase angle. It has received great attention due to its diverse possibilities of construction and operation. The improvements and benefits that can be gained when using a StatCom include the following:

- Rapid response to system disturbances.
- Provides smooth voltage control over a wide range of operating conditions.
- Dynamic voltage control in transmission and distribution systems.
- power oscillation damping in power transmission systems;
- transient stability improvement;
- ability to control not only reactive power but, if needed, also active power (with a DC energy source available)
- a small footprint, due to the replacing of passive banks by compact electronic converters;
- modular, factory built equipment, reducing site works and commissioning time;
- use of encapsulated electronic converters, which minimizes environmental impact on the equipment [5].

This paper analyzes the key issues in the power quality problems, as one of the prominent power quality problems, the origin, consequences and mitigation techniques of voltage sag problem has been discussed in detail. The STATCOM is applied to regulate transmission voltage to allow greater power flow in a voltage limited transmission network, in the same manner as a static var compensator (SVC), the STATCOM has further potential by giving an inherently faster response and greater output to a system with depressed voltage and offers improved quality of supply. The FACTS controllers are used to regulate the system voltage. The main applications of the STATCOM are; Distribution STATCOM (D-STATCOM) exhibits high speed control of reactive power to provide voltage stabilization and other type of system control. The DSTATCOM protects the utility transmission or distribution system from voltage sag and /or flicker caused by rapidly varying reactive current demand. During the transient conditions the D-STATCOM provides leading or lagging reactive power to active system stability, power factor correction and load balancing and /or harmonic compensation of a particular load [6,7].

## II. PRINCIPLE OF OPERATION

The D-STATCOM is power electronic based three phase reactive power compensation equipment, which

generates and /or absorbs the reactive power whose output can be varied so as to maintain control of specific parameters of the electric power system. The D-STATCOM basically consists of a coupling transformer with a leakage reactance, a three phase GTO/IGBT voltage source inverter (VSI), and a DC capacitor. The Basic Arrangement of D-STATCOM is as shown in Fig. 1 (a). The AC voltage difference across the leakage reactance power exchange between the D-STATCOM and the Power system, such that the AC voltages at the bus bar can be regulated to improve the voltage profile of the power system, which is primary duty of the D-STATCOM. However a secondary damping function can be added in to the D-STATCOM for enhancing power system oscillation stability. The D-STATCOM provides operating characteristics similar to a rotating Synchronous compensator without the mechanical inertia. The D-STATCOM employs solid state power switching devices and provides rapid controllability of the three phase voltages, both in magnitude and phase angle.

The D-STATCOM employs an inverter to convert the DC link voltage  $V_{dc}$  on the capacitor to a voltage source of adjustable magnitude and phase. Therefore the D-STATCOM can be treated as a voltage controlled source. The D-STATCOM can also be seen as a current controlled source.

The basic objective of a VSI is to produce a sinusoidal AC voltage with minimal harmonic distortion from a DC voltage. The operation of the D-STATCOM is as follows: The voltage is compared with the AC bus voltage system ( $V_s$ ). When the AC bus voltage magnitude is above that of the VSI magnitude ( $V_c$ ); the AC system sees the D-STATCOM as inductance connected to its terminals. Otherwise if the VSI voltage magnitude is above that of the AC bus voltage magnitude, the AC system sees the D-STATCOM as capacitance to its terminals. If the voltage magnitudes are equal, the reactive power exchange is zero. If the D-STATCOM has a DC source or energy storage device on its DC side, it can supply real power to the power system. This can be achieved by adjusting the phase angle of the D-STATCOM terminals and the phase angle of the AC power system. When phase angle of the AC power system leads the VSI phase angle, the DSTATCOM absorbs the real power from the AC system, if the phase angle of the AC power

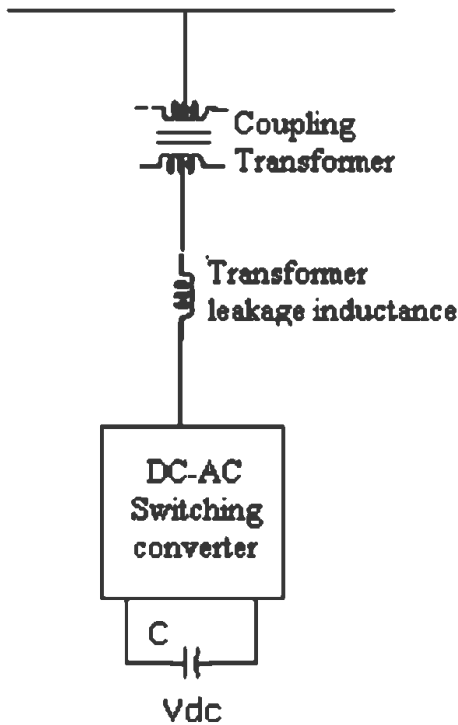


Fig. 1. Basic Arrangement of D-TATCOM

system lags the VSI phase angle, the D-STATCOM supplies real power to AC system.

The STATCOM's main function is to regulate key bus voltage magnitude by dynamically absorbing or generating reactive power to the ac grid network, like

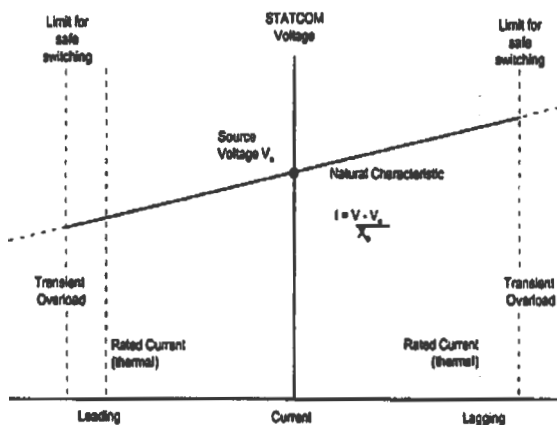


Fig. 2. Natural V-I characteristic of a D-STATCOM

a thyristor static compensator. This reactive power transfer is done through the leakage reactance of the coupling transformer by using a secondary transformer voltage in phase with the primary voltage (network side). The VI characteristics of the statcom is as shown in Fig. 2.

The real and reactive powers in D-STATCOM are given by the following equations.

$$P_{12} = (V_1 V_2 / X_{12}) \sin(\delta_1 - \delta_2) \quad \dots(1)$$

$$Q_{12} = (V_2 / X) (V_1 - V_2) \quad \dots(2)$$

1. VSI based D-STATCOM:

The basic principle of STATCOM is to use a voltage source inverter that generates a controllable AC voltage source behind a leakage reactance. The voltage difference across the transformer reactance produces active and reactive power flows with the network. The exchange of reactive power with the network is obtained by controlling the magnitude V and the exchange of active power results from a control of the phase shift w. The exchange of active power is only used to control the DC voltage [8]. Under steady state conditions and ignoring the losses the exchange of active power and thus the DC current are zero. A complete STATCOM generally combines several converters. Alternative inverter structures are being designed, for example using single-phase bridges in series. The most common methods used for controlling the AC voltage generated by the inverter are: DC variable voltage with a full wave inverter, sometimes called Pulse Amplitude Modulation (**PAM**). Constant DC voltage with a pulse-width modulated inverter (**PWM**).

The Voltage Source Inverter (VSI) is the building block of a D-STATCOM and other FACTS devices. A very simple inverter produces a square voltage waveform as it switches the direct voltage source on and off. The basic objective of a VSI is to produce a sinusoidal AC voltage with minimal harmonic distortion from a DC voltage.

The STATCOM generates a balanced 3-phase voltage whose magnitude and phase can be adjusted rapidly by using semiconductor switches. The STATCOM is composed of a voltage-source inverter with a DC capacitor, coupling transformer, and signal generation and control circuit. The voltage source inverter for the transmission STATCOM operates in

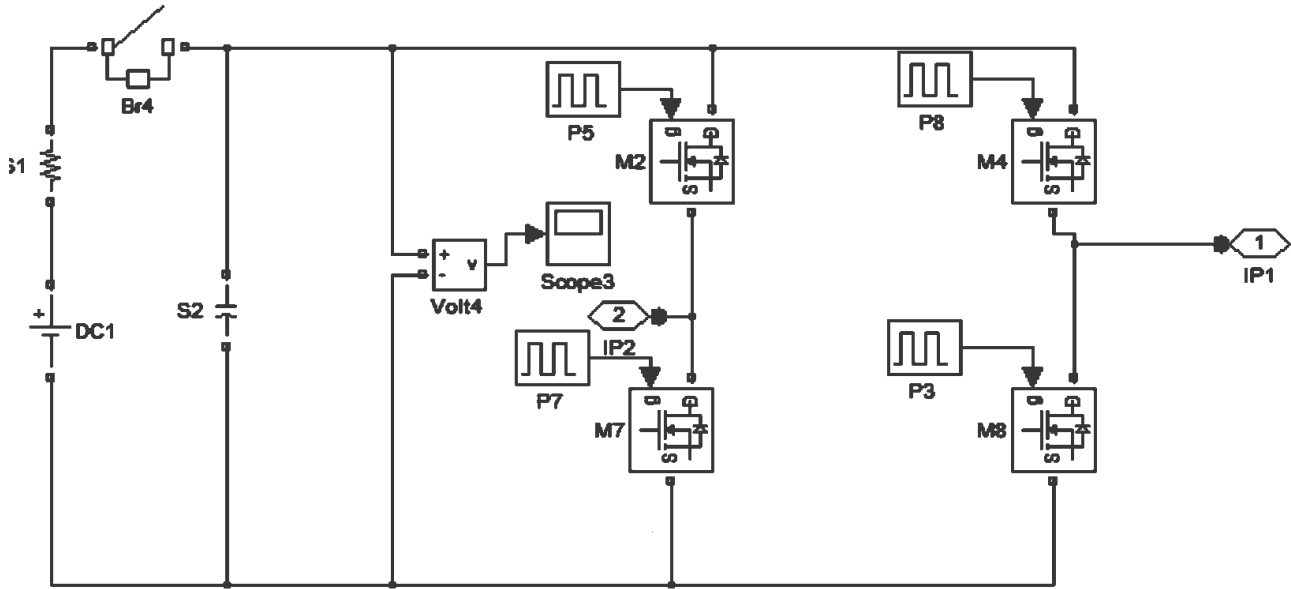


Fig. 3. VSI based D-STATCOM

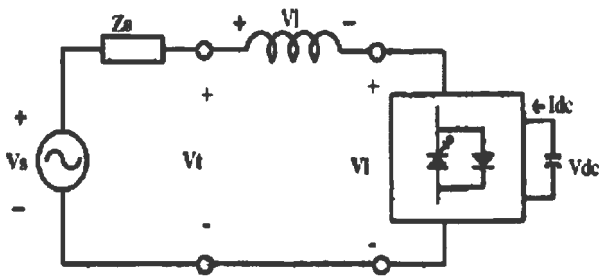


Fig. 4. Detailed operating principle

multi-bridge mode to reduce the harmonic level of the output current [9]. Fig. 3 shows a single-phase equivalent circuit in which the STATCOM is controlled by changing the phase angle between the **inverter output voltage and the bus voltage at the common**

**point connection point.** The inverter voltage  $V_i$  is assumed to be in phase with the AC terminal voltage  $V_t$  [10].

The STATCOM supplies reactive powers to the AC system if the magnitude of  $V_i$  is greater than that of  $V_t$ . It draws reactive power from the AC system if the magnitude of  $V_t$  is greater than that of  $V_i$ .

2. *PUSH PULL based D-STATCOM*

The push-pull inverter circuit comprising a transformer with a power output end coupled to a load and two power input ends is as shown in Fig. 5. A power driver unit is connected between the two power output ends. A power supply unit, and the power driver unit receives a power signal and outputs two sets of

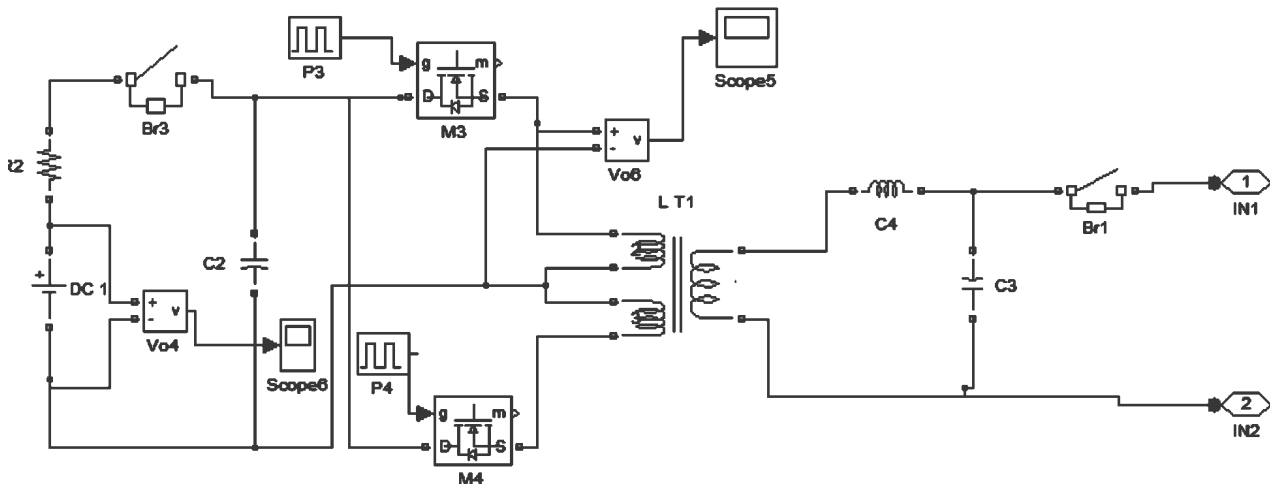


Fig. 5. PUSH PULL based D-STATCOM

drive signals having same frequency. Circuit diagram of Push-Pull inverter is shown in Fig 2. This circuit is also called parallel inverter since the capacitor appears in parallel with the transformer.  $T_1$  and  $T_2$  conduct alternatively to produce the AC output.

### III. SIMULATION RESULTS

For simulation studies, the eight bus system is considered. The circuit model of eight bus system is shown in Fig 6. Each line is represented by series impedance model. The shunt capacitance of the line is neglected. By closing the breaker in series with the load an additional load is added in parallel with load-1. Scopes are connected to display the voltages across the two loads. At  $t=0.2$  sec, additional load is connected. Voltage across the load-1 decreases. This fall in voltage is due to the increased voltage drop. The voltage across bus 4 is as shown in Fig. 7. The active and reactive power across bus4 are as shown in Fig 8.

#### 1. VSI BASED SYSTEM

The VSI based D-STATCOM added with an eight bus system is as shown in Fig. 9. The D-STATCOM is connected in the line between buses 4 and 8. The D-STATCOM Model is shown in Fig 10. The active and reactive power in the load-1, voltages across bus-4 is as shown in Fig. 11. It can be seen that the voltage across load-1 decreases and resumes to the rated value due to the injection of voltage by the D-STATCOM. The RMS voltage across bus-4 is as shown in Fig. 12. The real and reactive powers across bus-4 are as shown in Fig. 13. Bus number Vs Reactive power (Q) is as shown in Fig. 14. The FFT analysis for voltage is as shown in Fig. 15.

#### 2. PUSH PULL BASED SYSTEM

The Push Pull Inverter based D-STATCOM added with an eight bus system is shown in Fig. 16. The D-STATCOM is connected in the line between buses 4 and 8. The PUSH PULL based D-STATCOM Model is shown in Fig. 17. The active and reactive power in the load-1, voltages across D- STATCOM are shown in Fig. 18. It can be seen that the voltage across

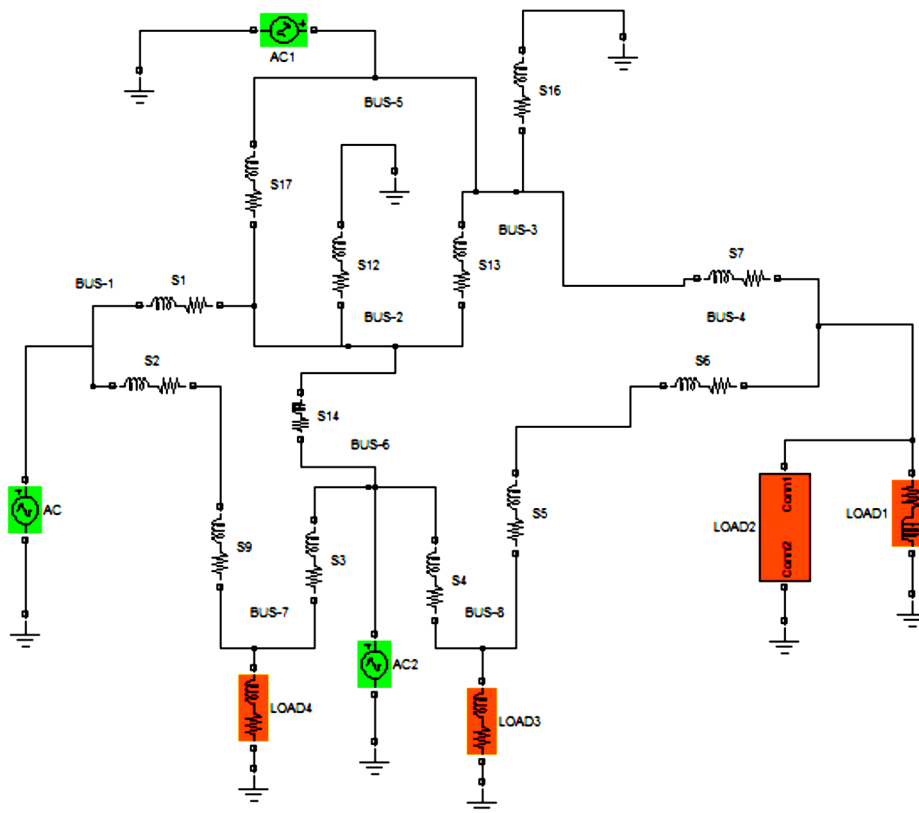


Fig. 6. Eight Bus System

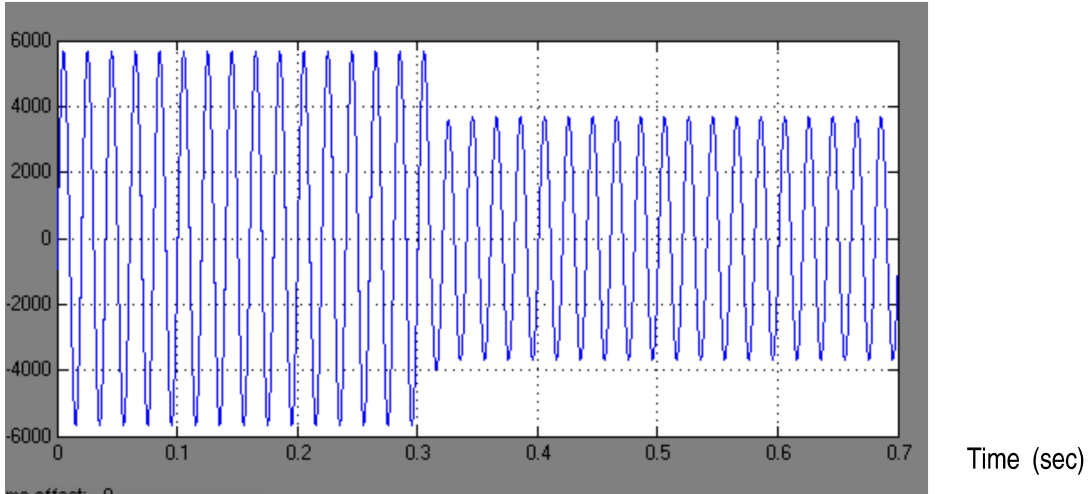


Fig. 7. Voltage across bus-4

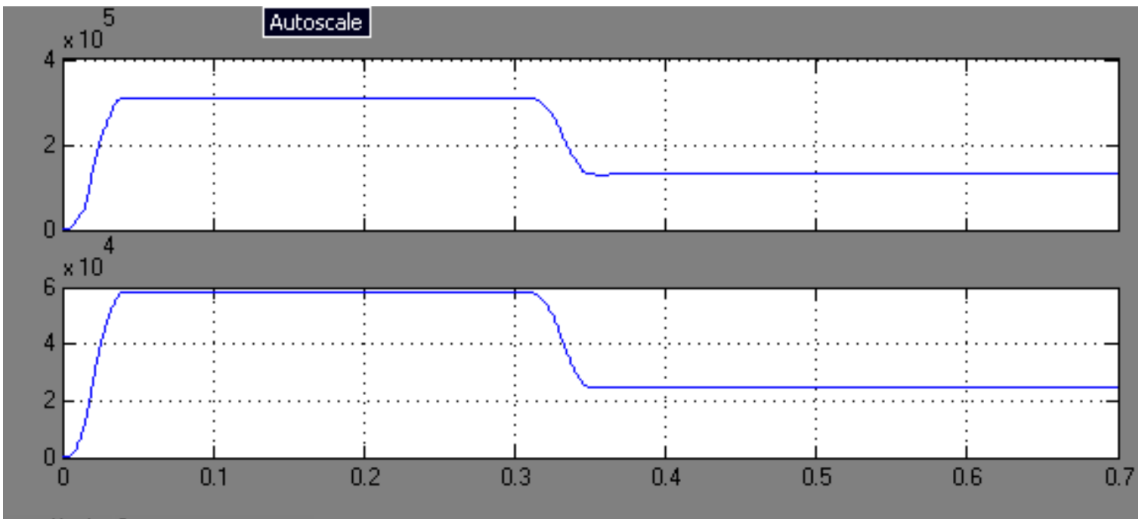


Fig. 8. Real and Reactive Power across Bus-4

load-1 decreases and resumes to the rated value due to the injection of voltage by the D-STATCOM. The RMS voltage across bus-4 is as shown in Fig. 19. The real and reactive power across bus-4 is as shown in Fig. 20. Bus number Vs Reactive Power Q) is as shown in Fig. 21. FFT analysis for voltage is as shown in Fig. 22.

Thus the D-STATCOM is able to mitigate the voltage sag produced by the additional load. Power quality is improved since the voltage reaches normal value.

Summary of real and reactive powers with and without VSI based D-STATCOM are given in Table 1.

The reactive power increases by the addition of D-STATCOM. This is due to the increase in the bus voltage.

Summary of real and reactive powers with and without PUSH PULL based D-STATCOM is given in the Table 2. The reactive power increases when the D-STATCOM is added.

Comparison of VSI and PUSH PULL based D-STSTCOM systems is given in Table 3. THD in Push Pull inverter system is less by 1.7% than VSI based D-STATCOM system.

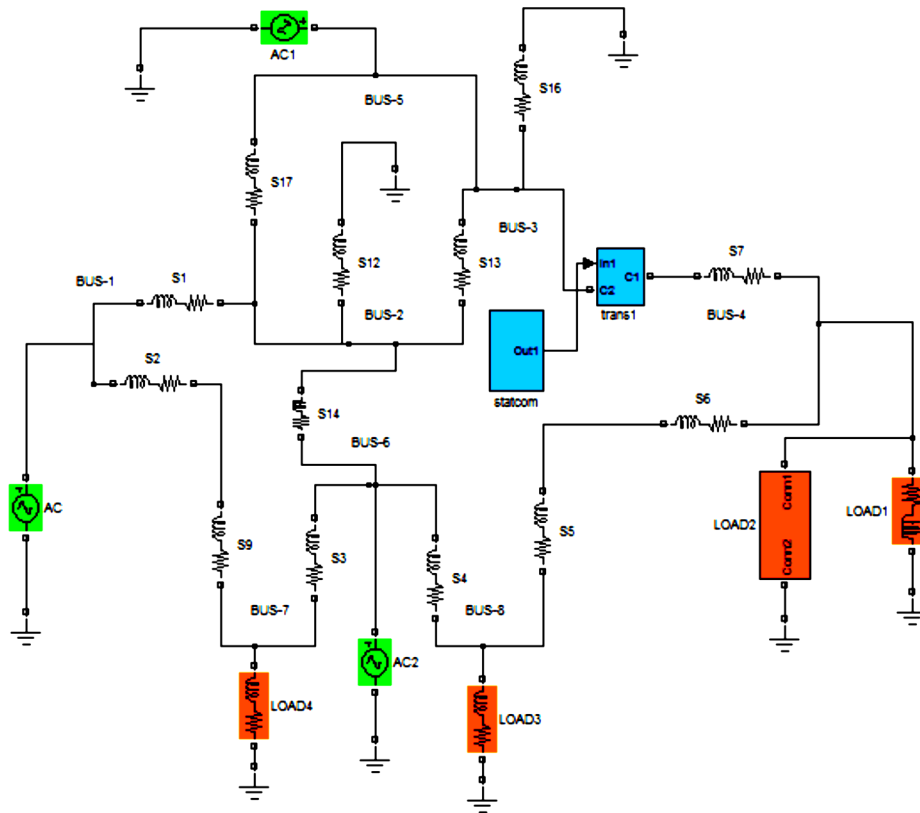


Fig. 9. Eight Bus System with VSI based D-STSTCOM

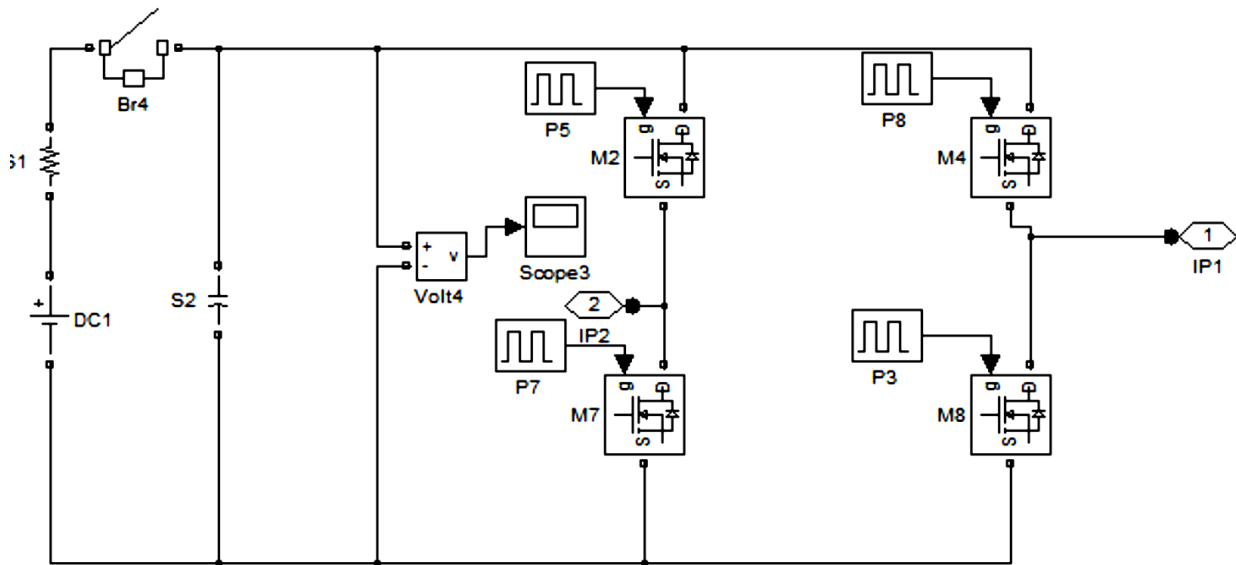


Fig. 10. VSI based DSTATCOM

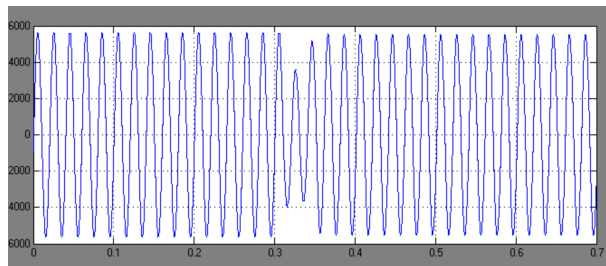


Fig. 11. Voltage across bus-4

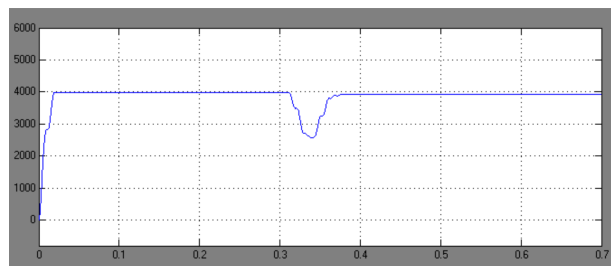


Fig. 12. RMS Voltage

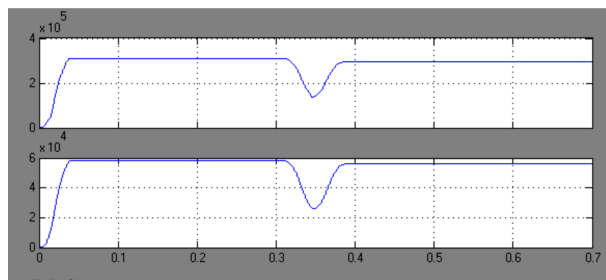


Fig. 13. Real and reactive power across bus-4

Table 1

Summary of Real and Reactive Powers with and without VSI based D-STATCOM

Bus No	Real Power Without D-Statcom (MW)	Real Power With D-Statcom (MW)	Reactive Power Without D-Statcom (MVAR)	Reactive Power With D-Statcom (MVAR)
BUS-4	0.130	0.296	0.245	0.56
BUS-7	0.60	0.604	0.38	0.39
BUS-8	0.27	0.326	0.26	0.31

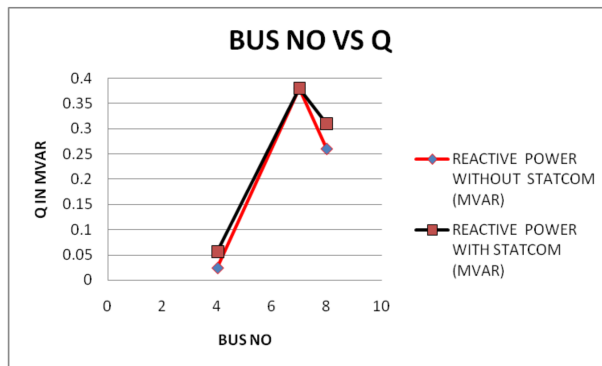


Fig. 14 Bus number Vs Reactive Power (Q)

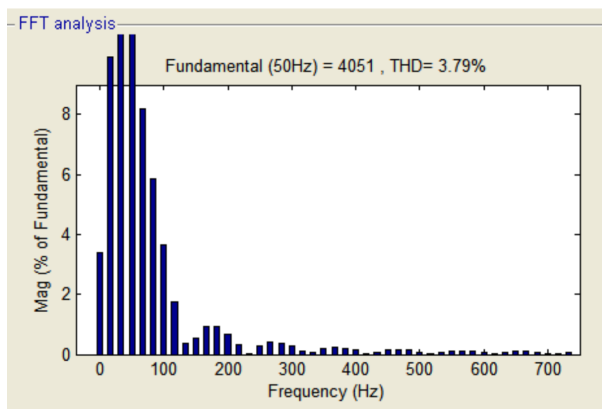


Fig. 15 FFT analysis for voltage

Table 2

Summary of Real and Reactive powers with and without Push Pull based D-STATCOM

Bus No	Real Power Without Statcom (MW)	Real Power With Statcom (MW)	Reactive Power Without Statcom (MVAR)	Reactive Power With Statcom (MVAR)
BUS-4	0.130	0.134	0.245	0.254
BUS-7	0.60	0.604	0.38	0.382
BUS-8	0.27	0.275	0.26	0.259



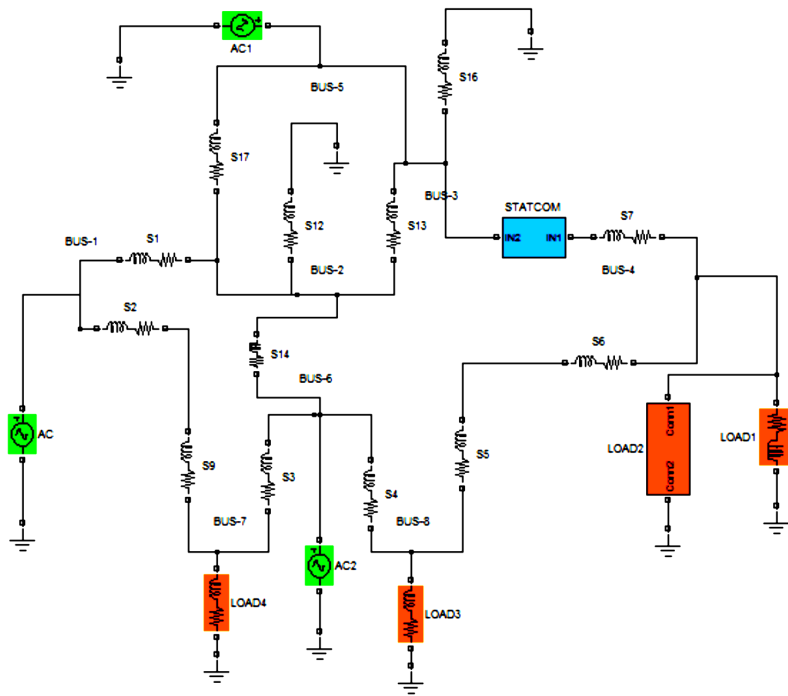


Fig. 16. Eight Bus System with PUSH PULL based D-STSTCOM

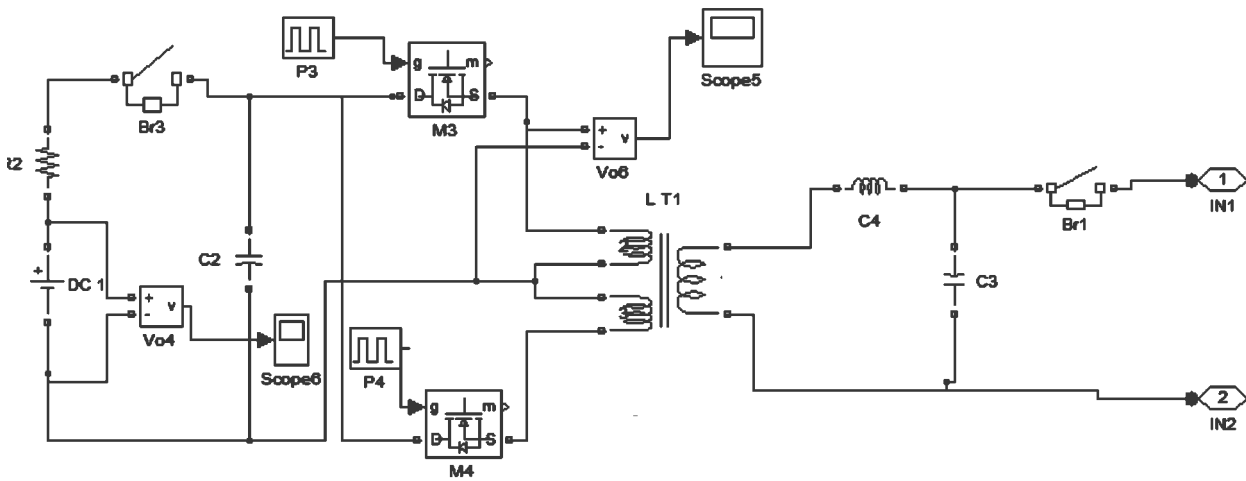


Fig. 17. PUSH PULL based D-STATCOM

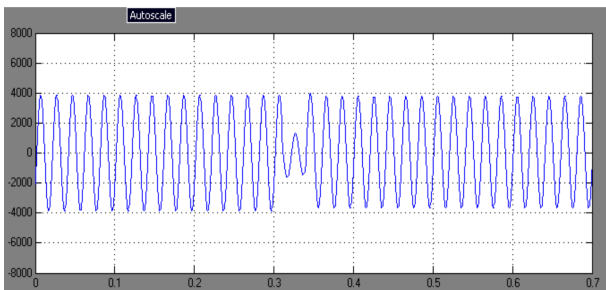


Fig. 18. Voltage across bus-4

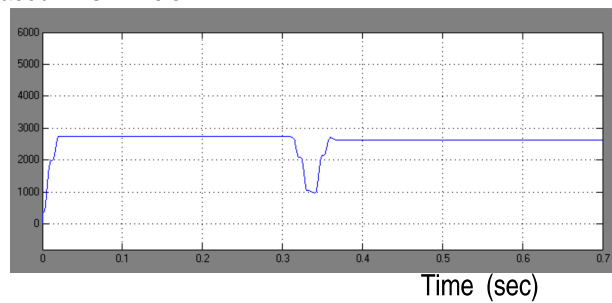


Fig. 19. RMS Voltage

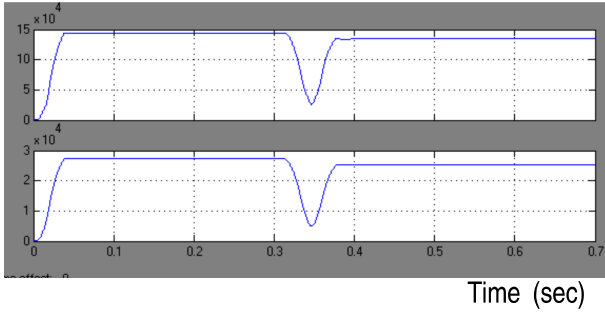


Fig. 20. Real and Reactive Power across bus-4

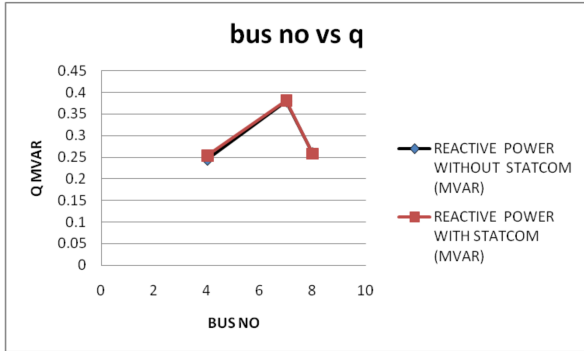


Fig. 21. Bus number Vs Reactive Power

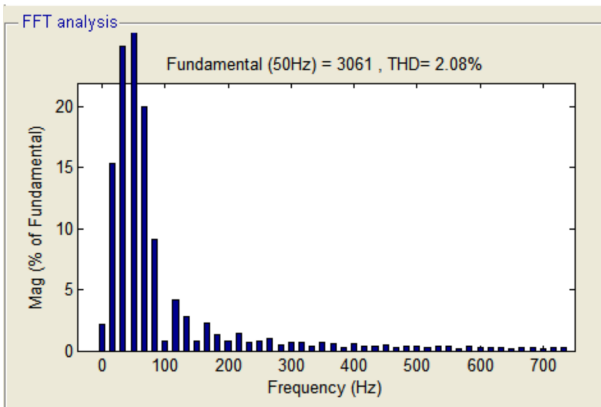


Fig. 22. FFT Analysis for Voltage

**Table 3**  
Comparison between VSI and Push Pull Inverter based D-STATCOM

Inverter Type	RMS Voltage (V)	SAG Time (SEC)	Compensation Time (SEC)	Reactive Power (MVA)	THD%
VSI	3919	0.31	0.4	0.55	3.79
Push Pull Inverter	2640	0.31	0.38	0.254	2.08

**IV. CONCLUSION**

Eight bus system is modeled and simulated using MATLAB SIMULINK. The simulation results of eight bus system with and without VSI based D-STATCOM are presented. Also, simulation of eight bus system with and without Push Pull inverter based D-STATCOM is done. VSI and Push Pull inverter based D-STATCOM systems are compared. Voltage stability is improved by using both types of D-STATCOM. This system has improved reliability and power quality. Push Pull inverter system is found to be superior to VSI based system. The simulation results are in line with predictions. The scope of present work is the modeling and simulation of eight bus system and compared. This concept can be extended to 64 bus system.

**REFERENCES**

- [1] S.V. Ravi Kumar and S. Siva Nagaraju, 2007. Power Quality Improvement Using D-statcom and DVR. International Journal of Electrical and Power Engineering, 1: 368-376.
- [2] R. Mieński, R. Paweek, I. Wasiak, "Shunt Compensation for Power Quality Improvement Using a STATCOM Controller: Modeling Simulation", IEE Proceedings - Generation, Transmission & Distribution, vol. 151, No. 2., pp. 274-280, 2004.
- [3] A. Ghosh., G. Ledwich, "Load Compensating DSTATCOM in weak AC system", IEEE Trans. Power Delivery, vol.18, No:4 pp. 1302-1309, 2003.
- [4] IEEE PES working group FACTS Applications, IEEE press. Pub. No. 96-TP-116, 1996.
- [5] N.G. Hingorani and L. Gyugyi, under-standing FACTS, concepts and technology of Flexible AC Transmission systems, piscatway, NJ: IEEE press, 2000.
- [6] Jianye Cuen, Shan Song, Zanj Wang, "Analysis and implement of Thyristor based STATCOM", 2006, International conference on Power System technology.
- [7] Mehdi Hosseini, Mahnoud Fotuhi Firuzabad, "Modeling of series and shunt distribution FACTS Devices in distribution system load flow", J. Electrical Systems 4-4 (2008), 1-12. N.G. Hingorani, L. Gyugi: Understanding FACTS. Concepts and Technology of Flexible AC Transmission Systems. IEEE Press, New York, 2000.
- [8] C. Schauder, "STATCOM for Compensation of Large Electric Arc Furnace Installations," Proceedings of the IEEE PES Summer Power Meeting, Edmoton, Alberta, July 1999, pp.1109-1112.
- [9] G. Reed, J. Paserba, T. Croasdaile, M. Takeda, Y. Hamasaki, T. Aritsuka, N. Morishima, S. Jochi, I. Iyoda, M. Nambu, N. Toki, L. Thomas, G. Smith, D. LaFolrest, W. Allard, D. Haas, "The VELCO

STATCOM-Based Transmission System Project," Proceedings of the 2001 IEEE PES Winter Power Meeting, Columbus, OH, January/February 2001.

- [10] C.Schauder, "STATCOM for Compensation of Large Electric Arc Furnace *Installations*," Proceedings of the IEEE PES Summer Power Meeting, Edmon on, Alberta, July 1999, pp. 1109-1112.
- [11] P.Giroux, G. Sybille, and H. Le-Huy, " Modeling and simulation of a Distribution STATCOM using imulinks power system blockset", in proc. Annu. Conf. IEEE industrial electronic society, pp, 990-994.
- [12] R. Mienski, R. Pawelek and I. Wasiak, "Shunt Compensation for Power Quality improvement using STATCOM controller: Modeling and simulation", IEEE Proce, Vol. 51, No. 2, March 2004.
- [13] M.G. Molina, P.E. Mercado, "Modeling of a D-STATCOM with Ultra Capacitor energy storage for power distribution system Applications", 24al28de May 2009.
- [14] S. Fuknda, T. Kanayama and K. Muraoka "Adaptive Learning based current control of active filter needles to detect current harmonics", IEEE APEC, 2004.
- [15] Modeling and simulation of VSC based STATCOM, Ashwinand Thyagarajan, iicpe06, pp 303-307.
- [16] Ray Arnold "Solutions to power quality problems" power engineering Journal 2001 Pages: 65-73.
- [17] Hendrimasdi, Nornanarivn, S.M. Bashi, "constructi on of prototype D-STATC OM for voltage sagmitigation", European Journal of scientific Research ISSN 145016 \* vol. 30, Nov 2009, pp. 112-127.
- [18] Deepika Masand, Shailandra Jain and ayatri Agnihotri, "Control Strategies for Distribution Static Compensator for Power Quality improvement", IEEE Journal of research vol.54, Issue 6, Nov-Dec 2008.
- [19] S.V. RaviKumar and S. Siva Nagaraju, "Simulation of D-STATCOM and DVR in Power Systems", ARPN Journal of Engineering and Applied Sciences, vol. NO.3, June 2007.
- [20] M.G. Molina and P.E. Mercado, "Control Design and simulation of D-STSTCOM with energy storage for Power Quality improvements", in Proc. IEEE/PEStrans 4, Distrib. L.A. Caracon, Venezuela, 2006.
- [21] M. SEI Moursi and M. Sharof, "Novel Controllers for the 48-Pulse VSC SATCOM and SSSC for voltage and Reactive Power Compensation", IEEE Transaction on Power Systems-vol. 20, No.4, Nov-2005.



**Mr. P. Venkata Kishore** has obtained his B.Tech degree from S.V. University India, in 1998 and M.Tech degree From S.V. University India, in 2003. He has 13 years of teaching experience. He is presently a research scholar at Satyabhama University, Chennai, India. He is working in the area of D-STATCOM. Presently he is working as Professor & HOD in EEE Dept., Mother Teresa Institute of Science and Technology, Sathupally-507303, Khammam (Dist), AP, INDIA.

**Email: [pvkishorefree@yahoo.com](mailto:pvkishorefree@yahoo.com)**



**Dr. S. Rama Reddy** is professor in the Electrical and Electronics Engineering Department, Jerusalem College of Engineering, Chennai, India. He obtained his D.E.E from the S.M.V.M. polytechnic, Tanuku, A.P., A.M.I.E. in Electrical Engineering from the Institution of Engineers (India), M.E. in Power Systems from Anna University, Chennai, India in 1987 and He received Ph.D degree in the area of Resonant Converters from College of Engineering, Anna University, Chennai India in 1995. He has published over 40 technical papers in national and international conferences proceedings / journals. He has secured the A.M.I.E. institution gold medal for obtaining the highest marks. He has won the AIMO best project award and Vijaya Ratna Award. He has 20 years of teaching experience. His research interests include the areas of resonant converters and FACTS. He is a life member of the Institution of Engineers (India), Indian Society for Technical Education, Systems Society of India, Society of Power Engineers and Institution of Electronics and Telecommunication Engineers (India). He has published text books on Power Electronics, Solid State Circuits and Electronic circuits. **Email: [sreddy@yahoo.com](mailto:sreddy@yahoo.com)**